

ERRATUM

Plagioclase-melt equilibria in hydrous systems, by T. B. Housh and J. F. Luhr (v. 76, p. 477–492). Some of the plagioclase compositions shown in Figure 2 were incorrectly plotted. A corrected version of the figure is given below.

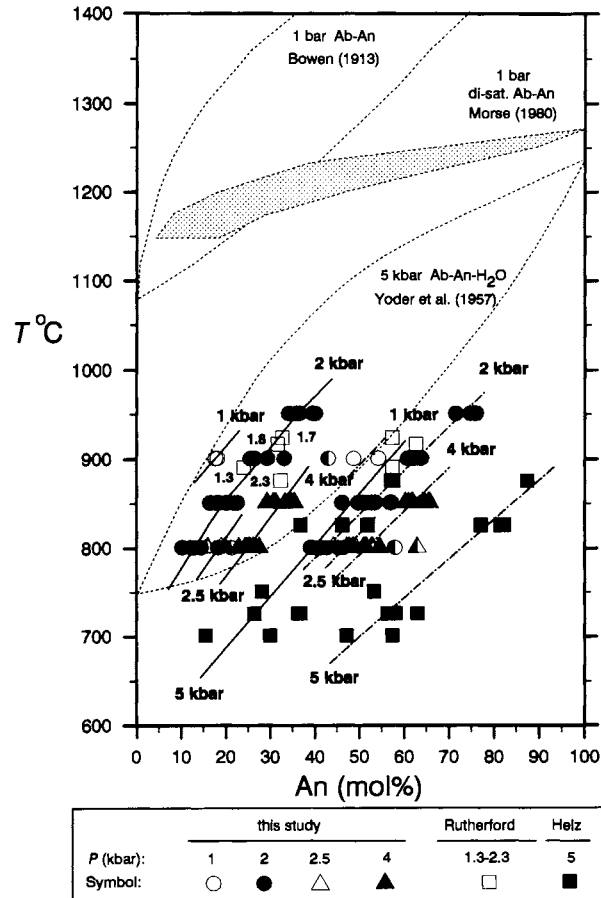


Fig. 2. Albite-anorthite binary diagram showing the 1-bar liquidus-solidus loop of Bowen (1913) and the 5-kbar H₂O-saturated loop of Bowen (1913) and the 5-kbar H₂O-saturated loop of Yoder et al. (1957). Also shown is the collapse of the loop when projected from diopside saturation in the system diopside-albite-anorthite (Wyllie, 1963; Morse, 1980). Symbols show plagioclase and projected glass compositions from this study, Helz (1976), and Rutherford et al. (1985). Multicomponent glass compositions are plotted as 100[normative an/(an + ab)]. Half-solid symbols indicate the eight samples whose plagioclase or glass compositions deviate from the general trends and are deleted from the modeling. Values near open squares indicate experimental pressures in kilobars for data from Rutherford et al. (1985). Solid and dash-dotted lines labeled 1, 2, 2.5, 4, and 5 kbar indicate mean loci of projected isobaric melt and plagioclase compositions, respectively.