

Figure S1. BSE images showing the bead where the Zn-rich mineral in Figure 2 was examined 12 months apart. Cr-Usp: chromian ulvöspinel.

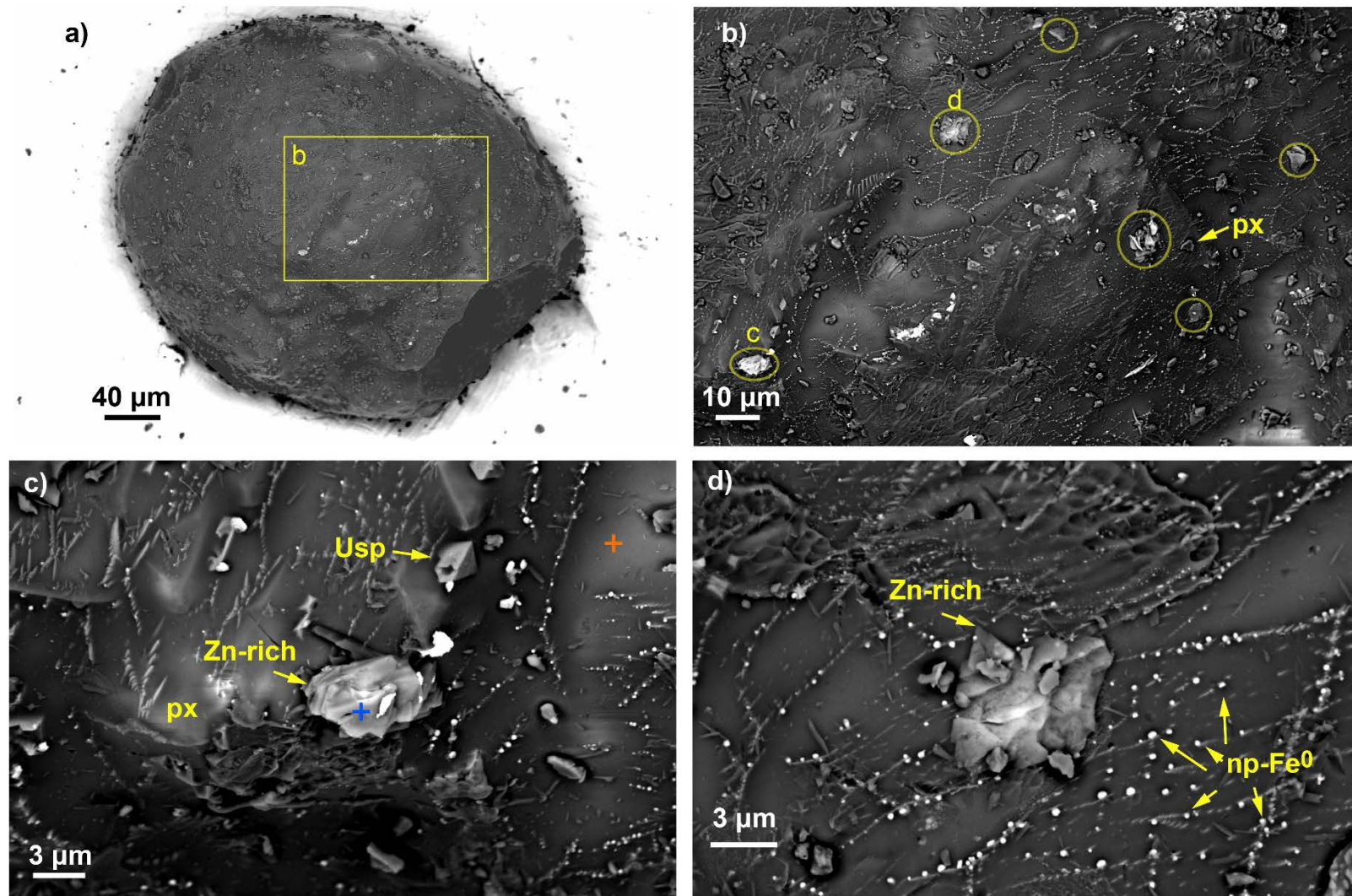


Figure S2. BSE images of an orange bead from the 2018 sample mount. Location of (b) is shown in (a), and locations of (c) and (d) are marked in (b). In (b), yellow circles show the locations of the Zn-rich mineral aggregates. In (c), locations of the EDS spectra of Zn-rich mineral and glass in Figure 3 are shown. Usp: ulvöspinel, px: pyroxene, np-Fe⁰: nanophase metallic iron.

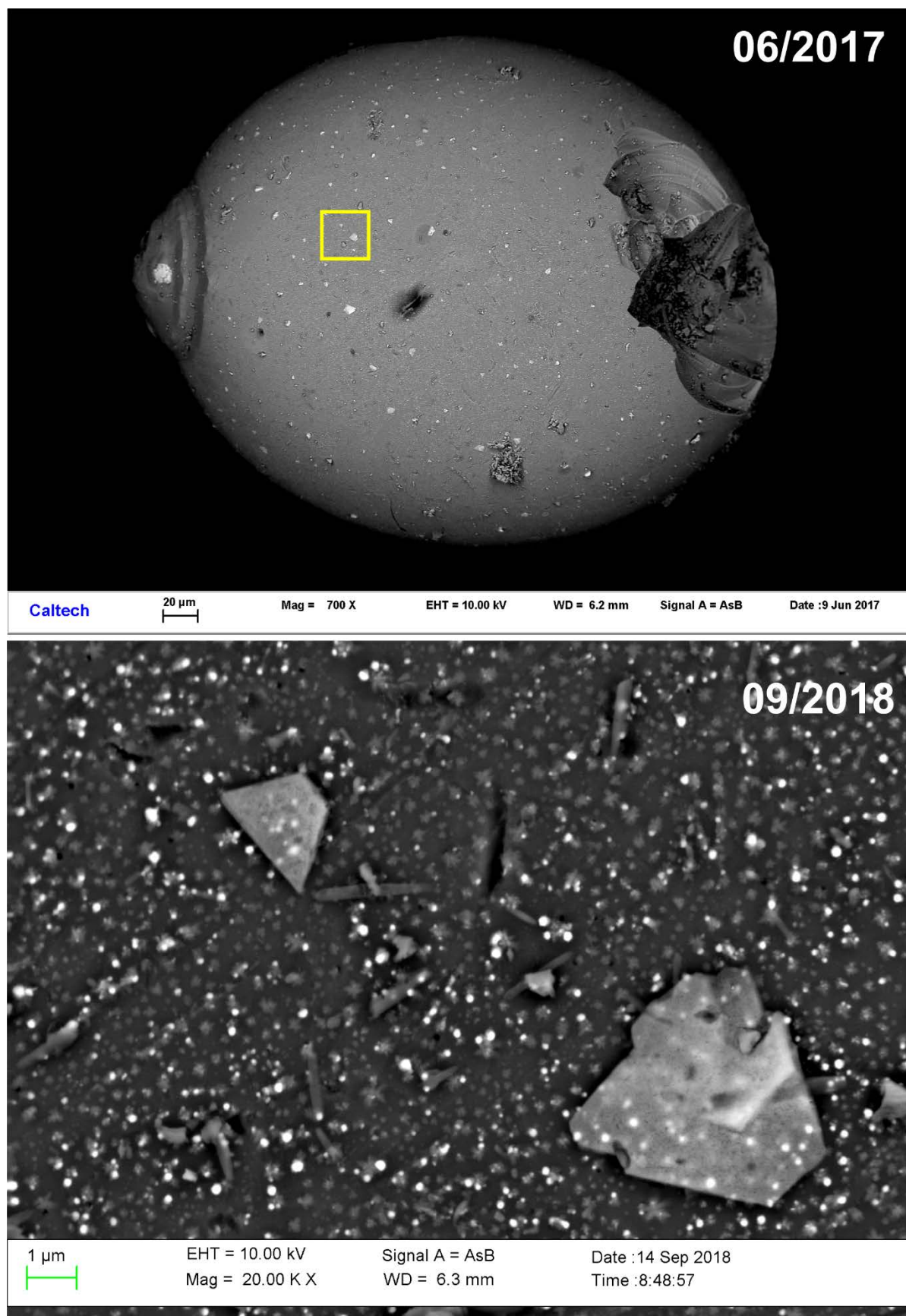


Figure S3. BSE images showing Zn-rich minerals on the bead in Figure 1 that were imaged ~15 months later with no clear changes in the appearance.