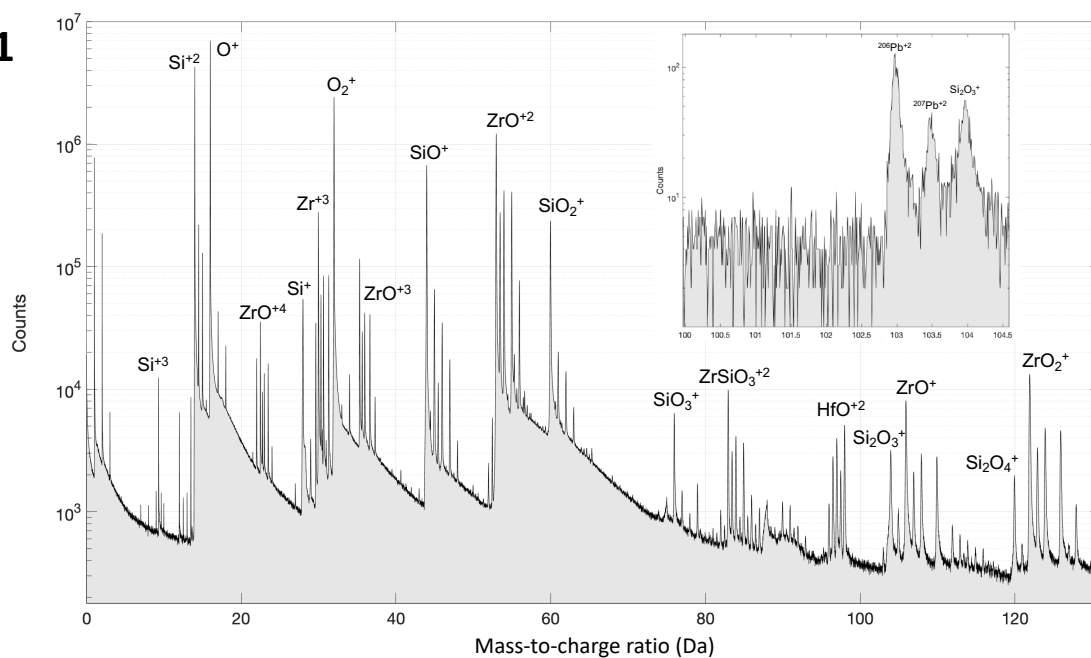
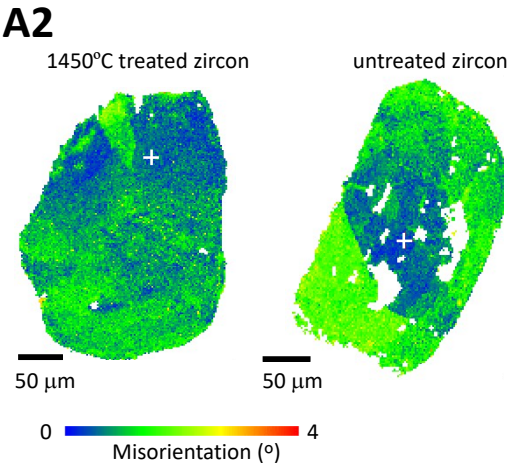


**A1**



Representative mass spectra from APT analysis of zircon in this study. Inset shows range for Pb isotopes within the clusters.



Misorientation with respect to the white cross as measured by EBSD. Step size was 2  $\mu\text{m}$ . Observed misorientations are associated with fractures. Following the criteria outlined in Reddy et al. (2007), we observe no misorientation associated with crystal plasticity.

