

Supporting Information for

Spectroscopic evidence for the spin transition of iron-bearing δ - AlOOH at high pressure

Xiaowan Su¹, Chaoshuai Zhao^{2,*}, Liangxu Xu², Chaojia Lv², Xitong Song², Takayuki Ishii³,
Yuming Xiao⁴, Paul Chow⁴, Qiang Sun¹, Jin Liu^{2,*}

¹School of Earth and Space Sciences, Peking University, Beijing 100871, China.

²Center for High Pressure Science and Technology Advanced Research, Beijing 100094, China.

³Bayerisches Geoinstitut, University of Bayreuth, Bayreuth 95440, Germany.

⁴HPCAT, X-Ray Science Division, Argonne National Laboratory, Argonne, Illinois 60439, USA.

*Correspondence to: C. Zhao (chaoshuai.zhao@hpstar.ac.cn) and J. Liu (jin.liu@hpstar.ac.cn)

Contents of this file

Figures S1-S2

Tables S1-S2

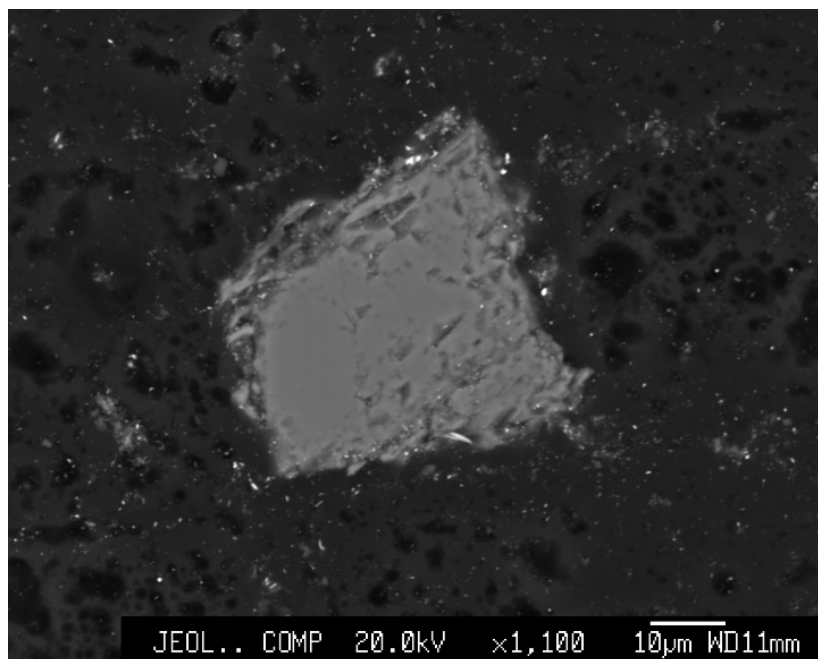


Figure S1. Backscattered SEM images of δ -($\text{Al}_{0.52}\text{Fe}_{0.48}$)OOH phase.

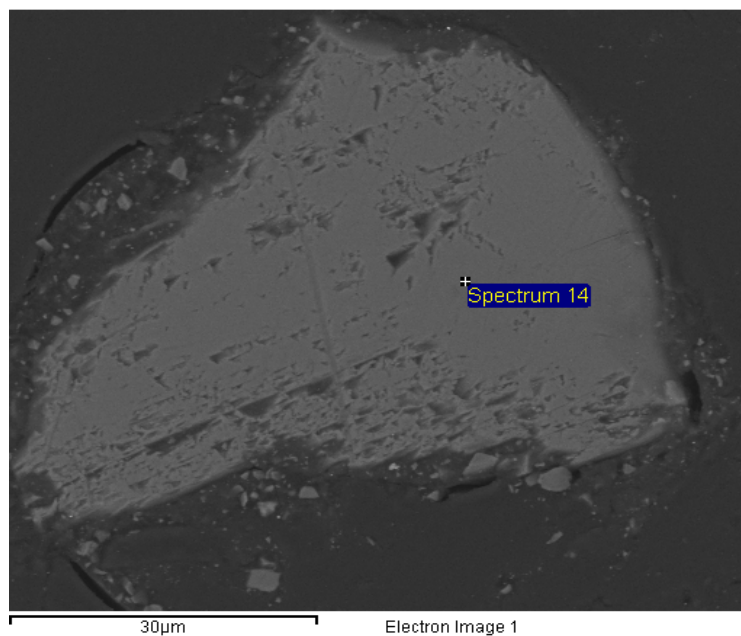


Figure S2. Backscattered SEM images of $\delta\text{-(Al}_{0.85}\text{Fe}_{0.15}\text{)OOH}$.

Table S1. SEM results of δ -(Al_{0.52}Fe_{0.48})OOH

Point#	Al (at%)	Fe (at%)	Total
1	50.79	49.21	100
2	51.53	48.47	100
3	52.22	47.78	100
4	51.80	48.20	100
5	51.94	48.06	100
Average	51.66	48.34	100

The five points were chosen in smooth and flat surface of δ -(Al_{0.52}Fe_{0.48})OOH.

Table S2. SEM results of δ -(Al_{0.85}Fe_{0.15})OOH

Points#	Al (at%)	Fe (at%)	Total
1	84.21	15.79	100
2	84.03	15.97	100
3	85.14	14.86	100
4	84.93	15.07	100
Average	84.58	15.42	100

The four points were chosen in smooth and flat surface of δ -(Al_{0.85}Fe_{0.15})OOH.