

Appendix

Figure S1

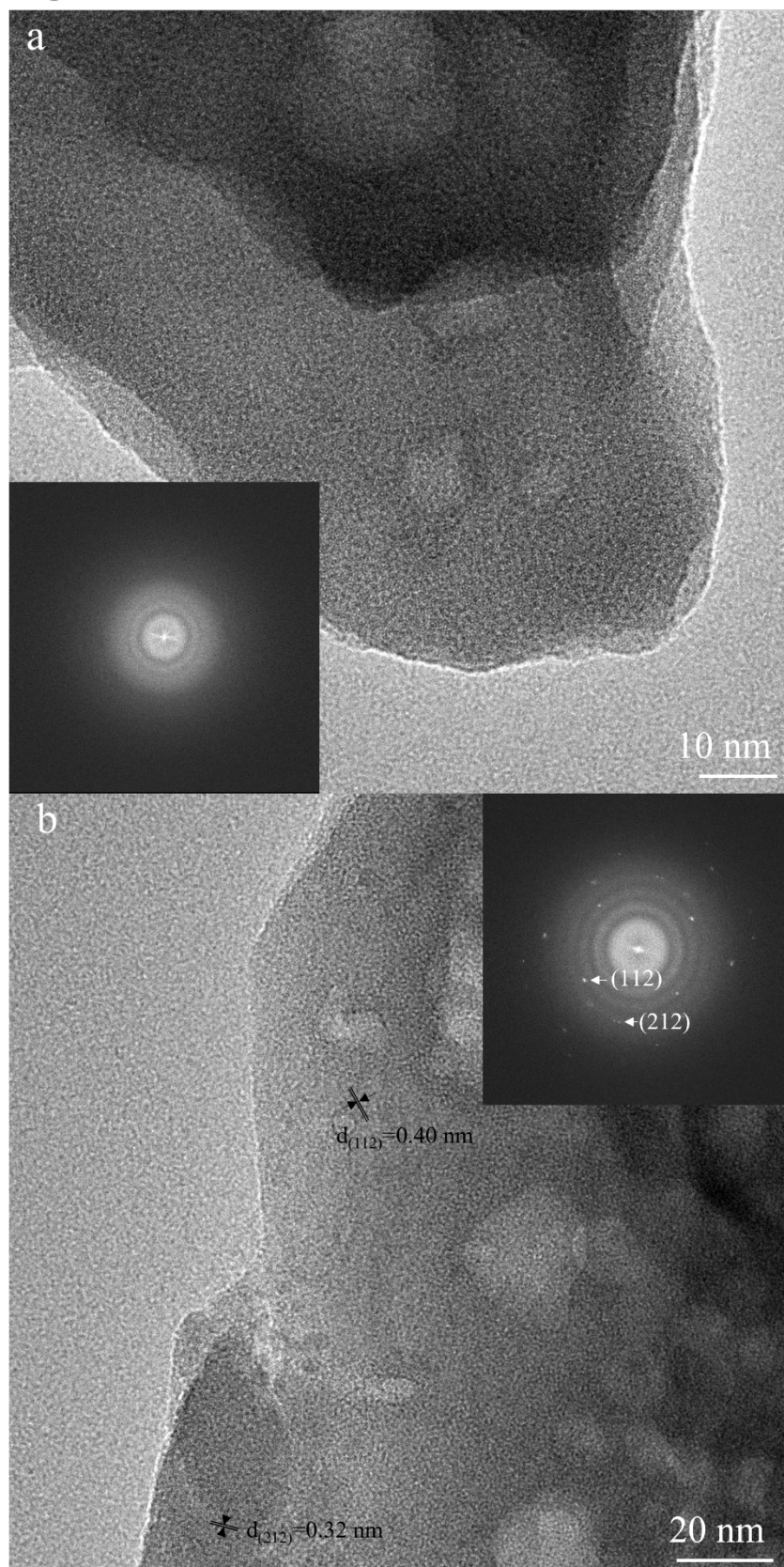


Figure S1 HR-TEM images of  $\text{AFe}^{\text{II}}$  (a) and  $\text{AFe}^{\text{III}}$  (b) with corresponding fast Fourier transform (FFT) patterns on the corner;  $\text{AFe}^{\text{II}}$  (a) shows diffused scattering rings consistent with amorphous feature, while  $\text{AFe}^{\text{III}}$  (b) exhibits discrete diffraction spots indicating the presence of crystalline phase. The measured  $d$ -spacings and corresponding indices of crystal face are labeled based on scorodite powder diffraction file (PDF) #37-0468.