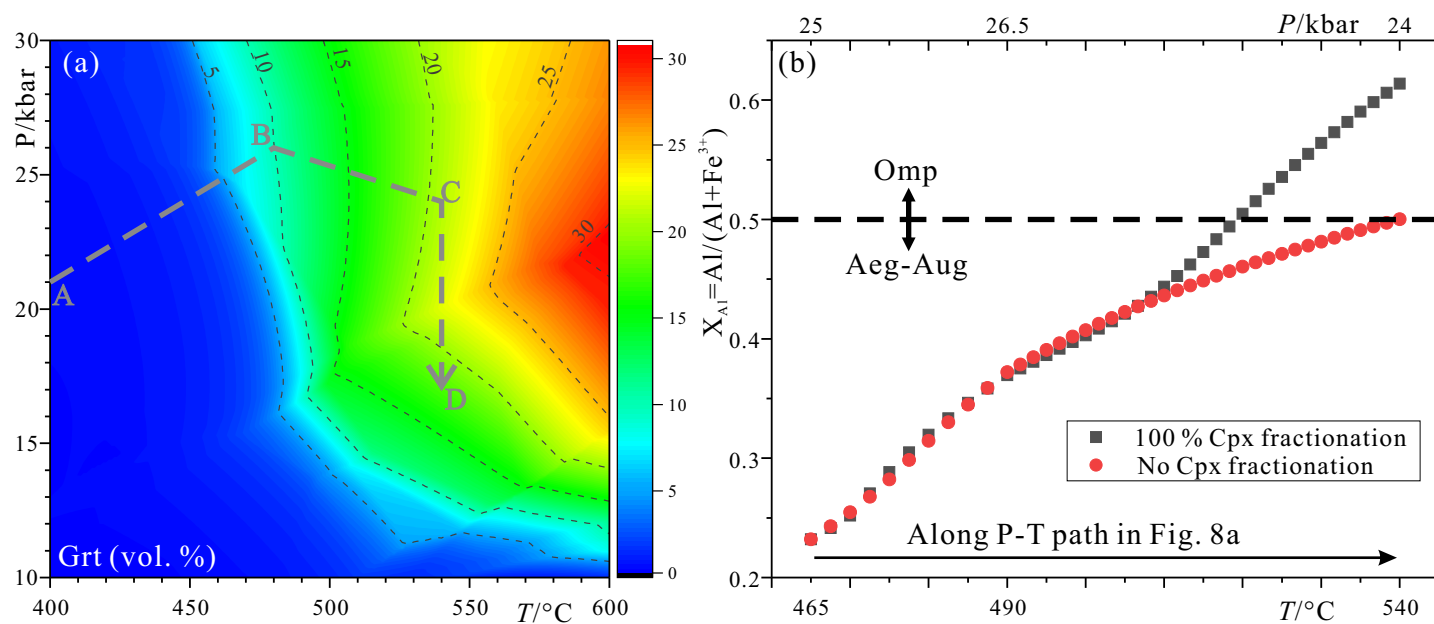
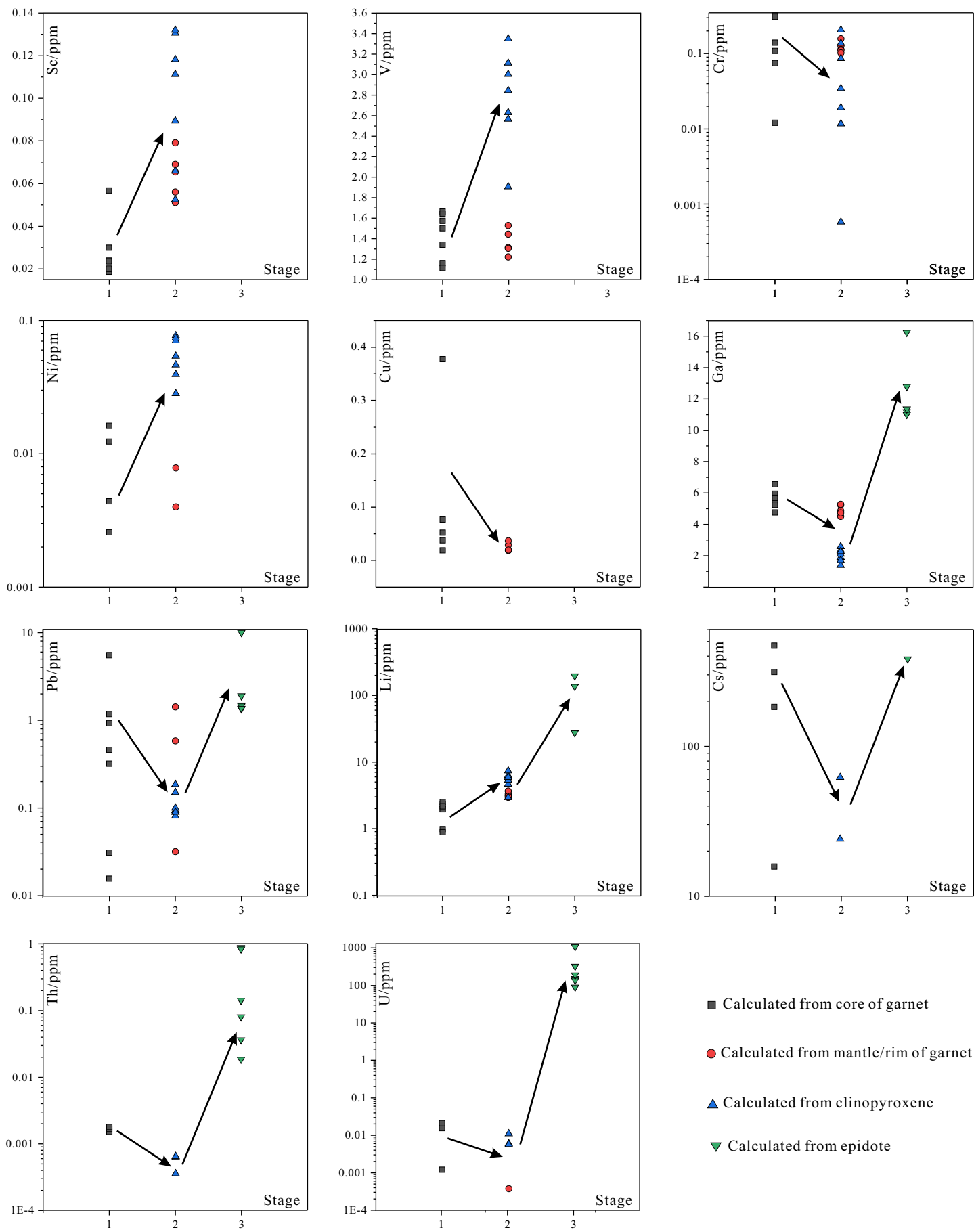


Figure S1

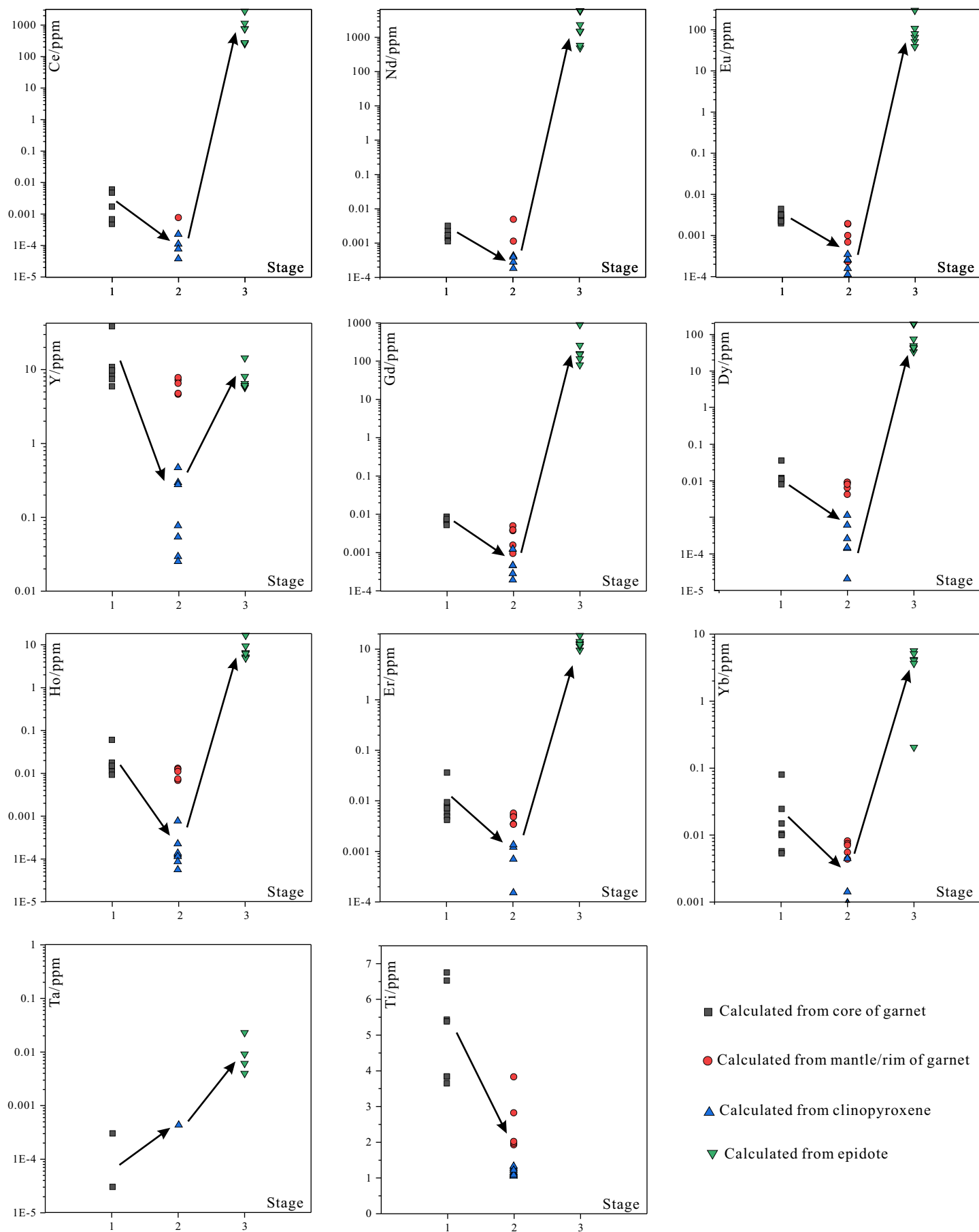


**Figure S1.** (a) Calculated volume percentage of garnet (vol.%) for the host eclogite; (b) the effect of clinopyroxene fractionation and non-fractionation on its  $Al/(Al+Fe^{3+})$  along the assumed P-T path. Dashed line with arrow represents the P-T path from Fig. 8a.

Figure S2



## Continued



**Figure S2.** Trace element concentrations of multi-stage vein-forming fluids calculated by mineral-fluid coefficients. Stages 1–3 represents fluid compositions in equilibrium with core of garnet, omphacite + mantle/rim of garnet and epidote in the vein, respectively. Heavy lines with arrows indicate potential evolutionary trends for fluids. Shown here are elements other than those in Fig. 11.