

Magma oxygen fugacity and volatile components control the Miocene high-Sr/Y granitoids forming either Cu or W mineralization in the Gangdese metallogenic region, Xizang, China

Supplementary Figures

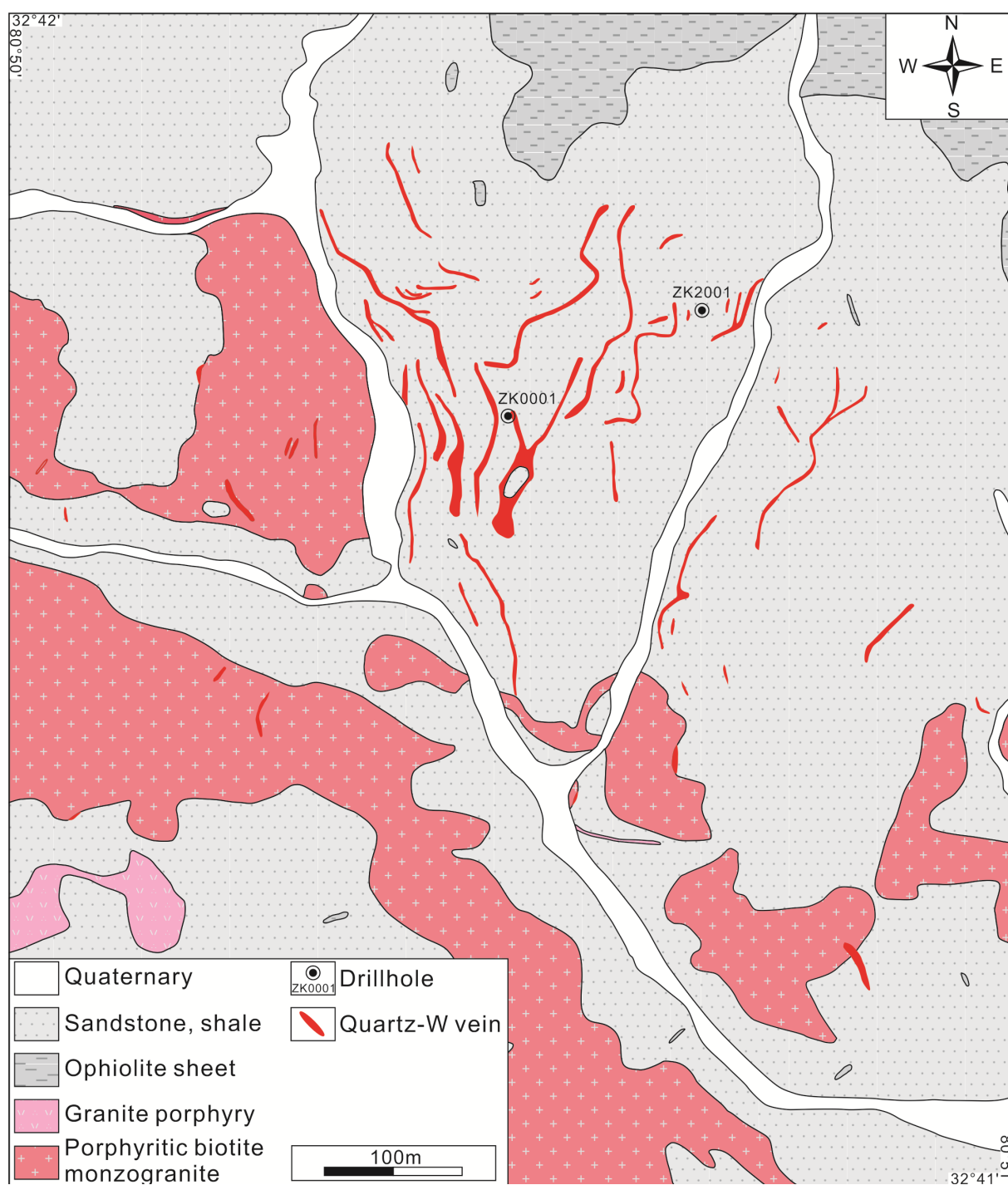


FIGURE S1. Simplified geological map of the Jiaoxi wolframite deposit

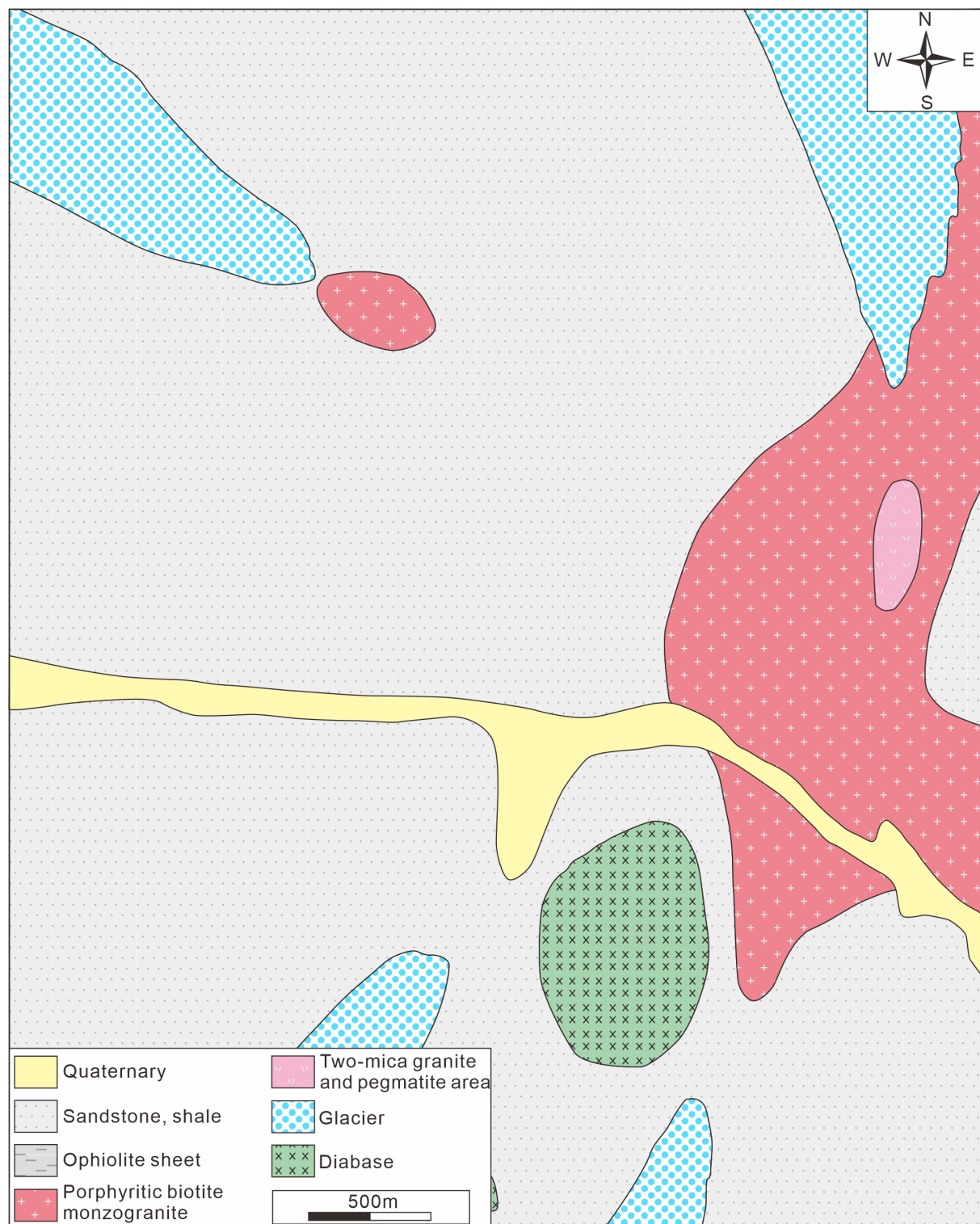


FIGURE S2. Simplified geological map of the Jiaodong wolframite mineralization area

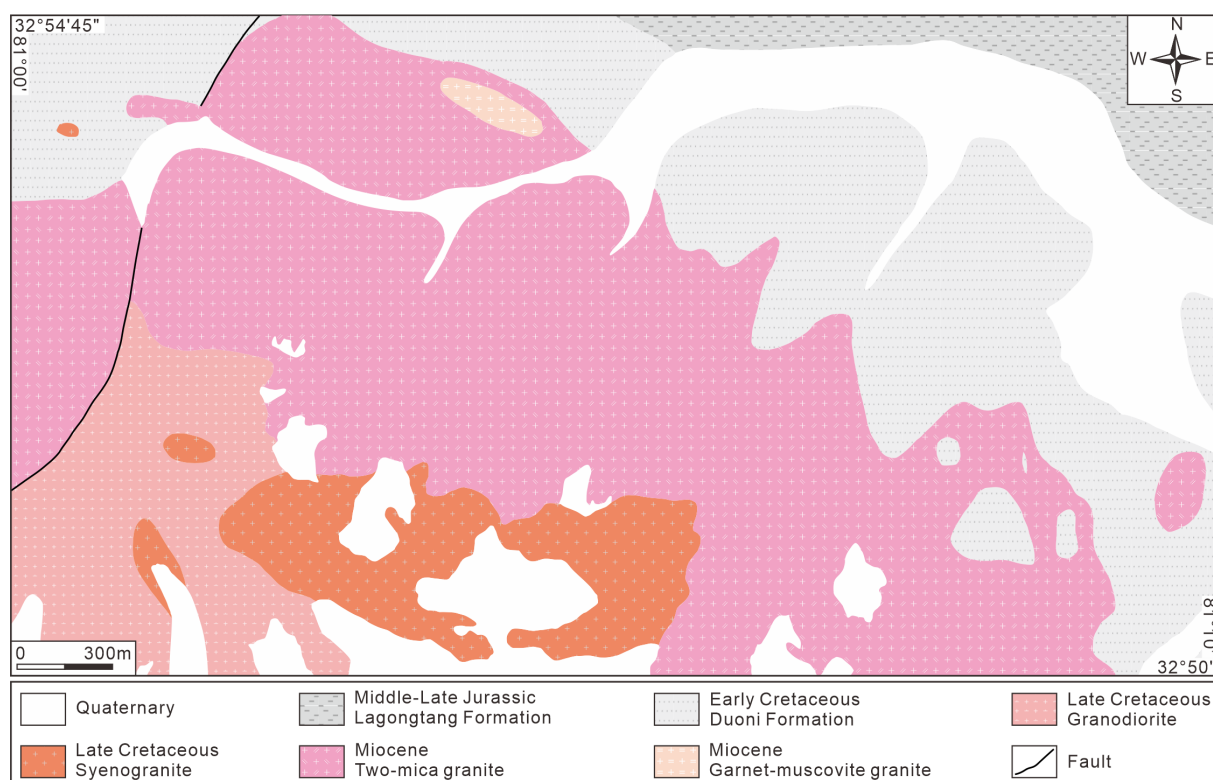


FIGURE S3. Simplified geological map of the Anglonggangri wolframite mineralization area

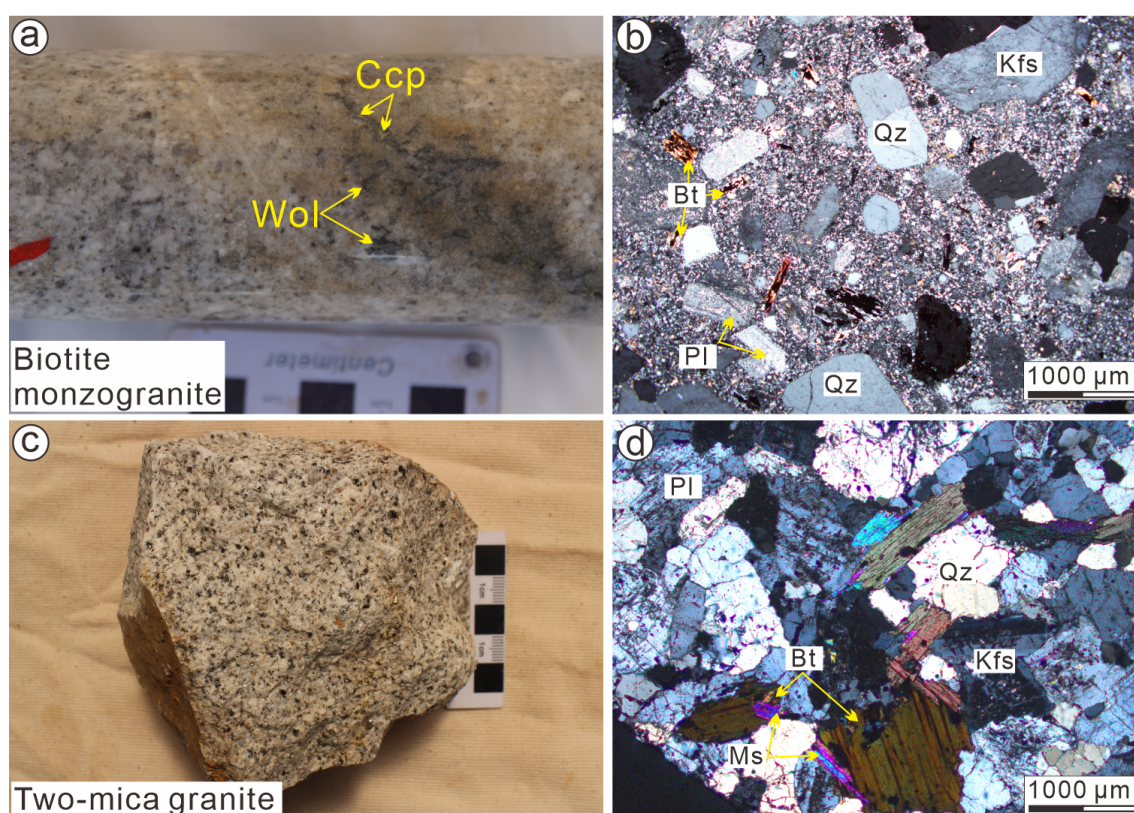


FIGURE S4. Petrographic characteristics and mineral compositions of the biotite monzogranite and two-mica granite

Mineral abbreviations: Qz-quartz; Bt-biotite; Pl-plagioclase; Ms-muscovite; Kfs-K-feldspar; Ccp-chalcopyrite; Wol-wolframite.

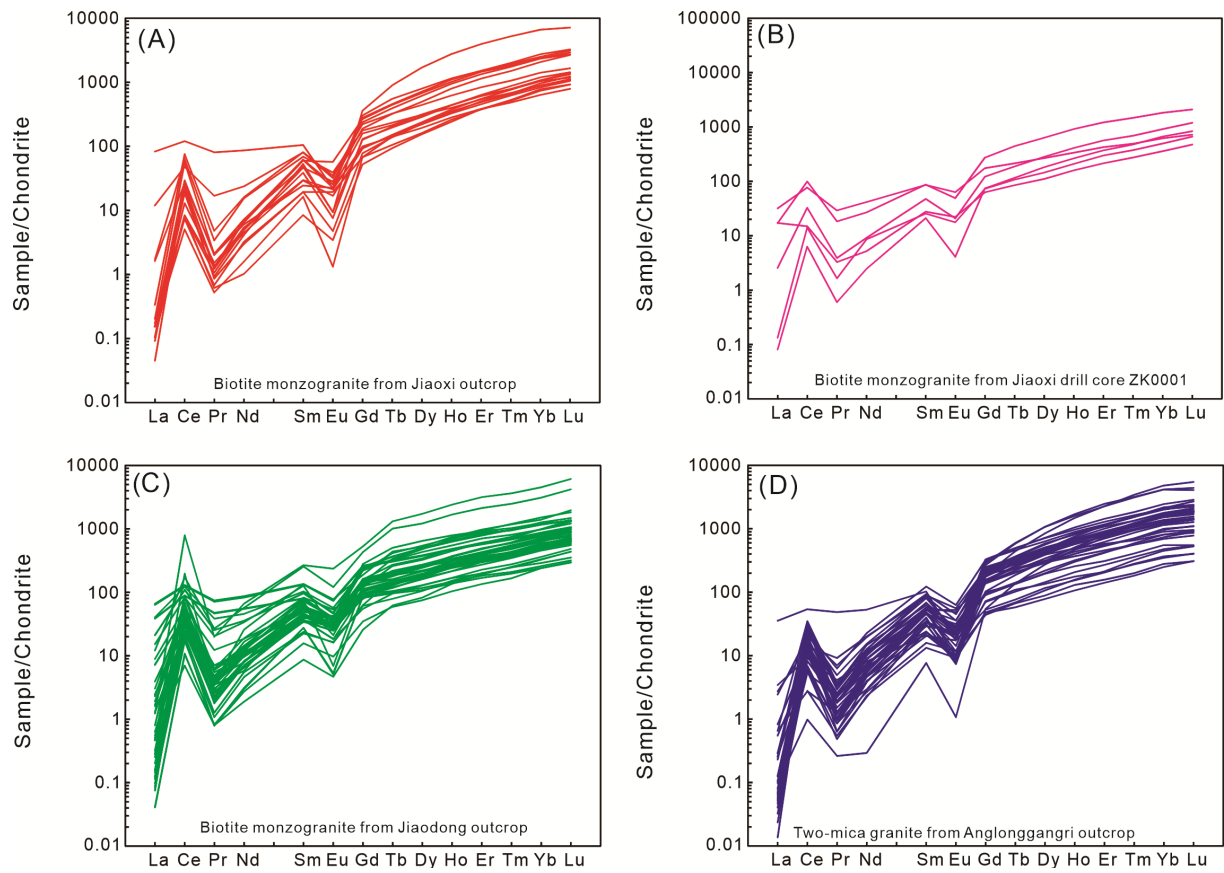


FIGURE S5. Chondrite-normalized REE patterns for zircons from the study areas