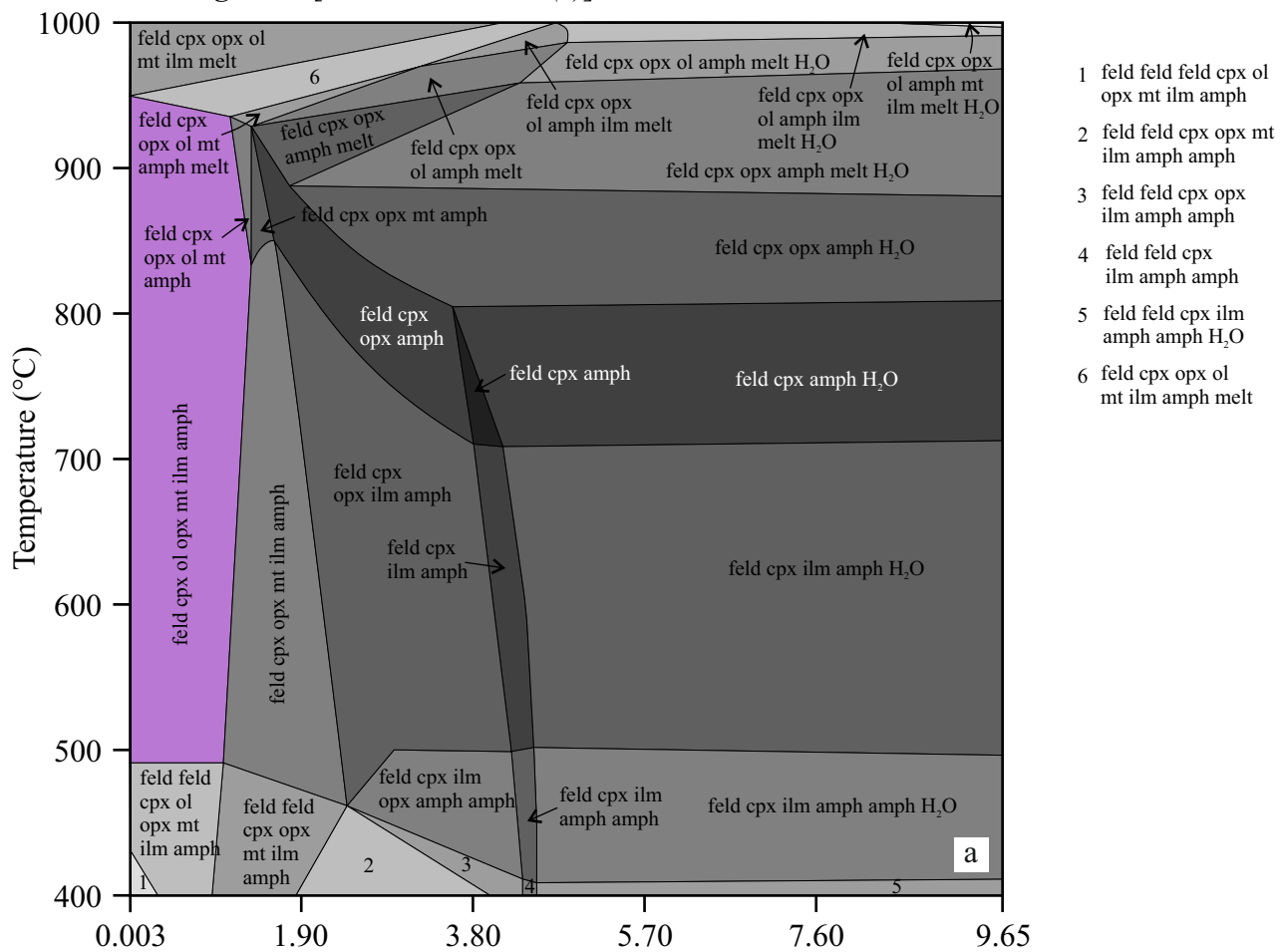


$$P = 1.5 \text{ kbar}$$


Olivine gabbro [78R-7W-23/30 (c)]

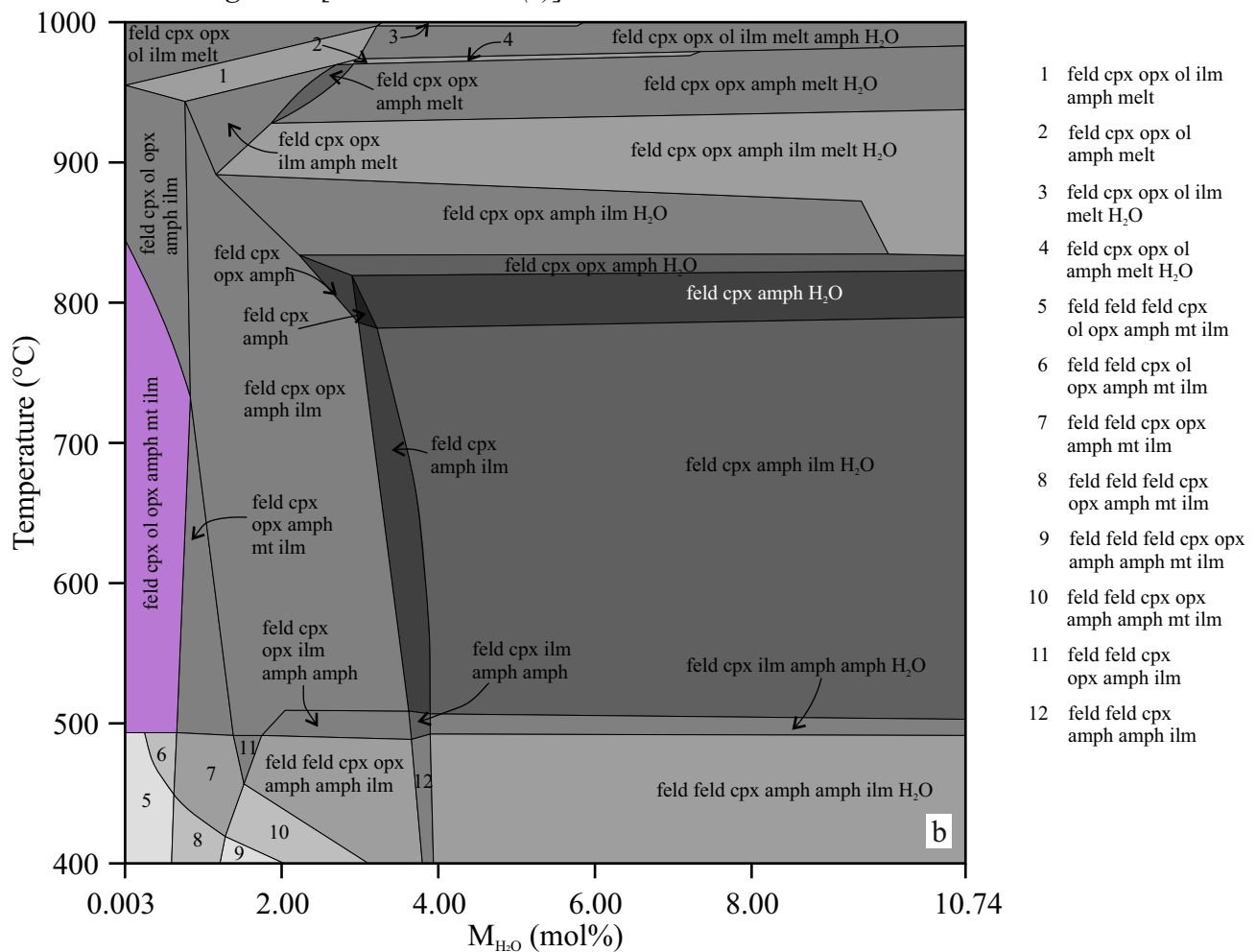
$$P = 1.5 \text{ kbar}$$


Figure S1. Binary phase diagrams for a. oxide gabbro, b. olivine gabbro at varying molar H₂O proportions in the bulk compositions at 1.5 kbar. The observed mineralogical assemblages are shown by purple filled area in both the figures. Abbreviations: feld = feldspar, cpx = clinopyroxene, opx = orthopyroxene, ol = olivine, amph = amphibole, mt = magnetite, ilm = ilmenite.