

CORRECTION to *REVIEWS IN MINERALOGY*, Vol 35,

*GEOMICROBIOLOGY: INTERACTIONS BETWEEN MICROBES AND MINERALS*

*Chapter 11, p. 379, Figure 6.*

After this book went to press, Figure 6 was discovered to be the wrong one. The correct figure with the correct bar length scale is shown below. The figure caption is correct as printed.

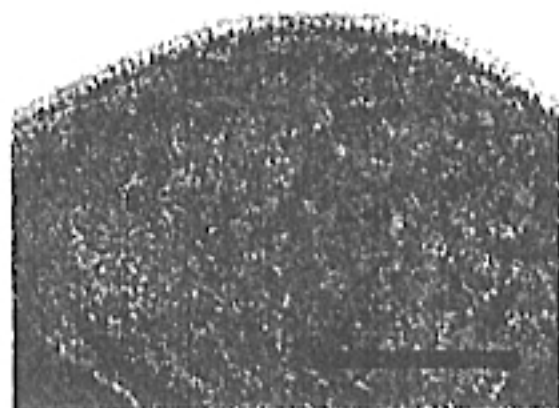


Figure 6 (right). A negatively stained *Sulfolobus* spp. demonstrating the crystalline nature of the cell envelope. Bar equals 200 nm.